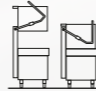




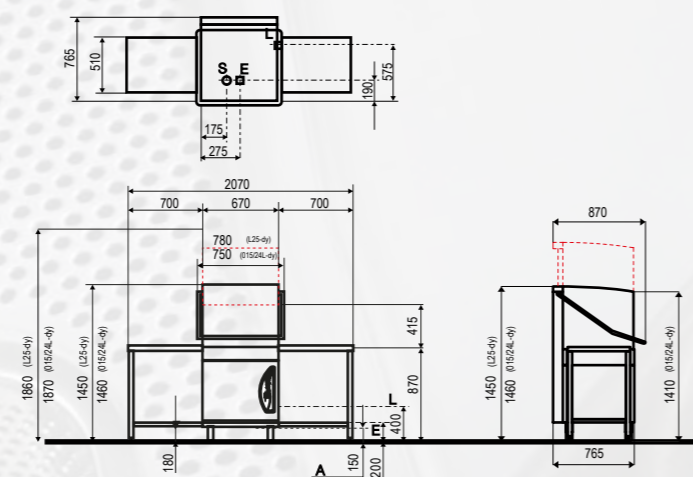


The manufacturer reserves the right to make modifications of materials and models without warning.

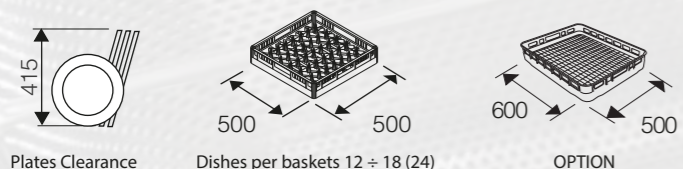
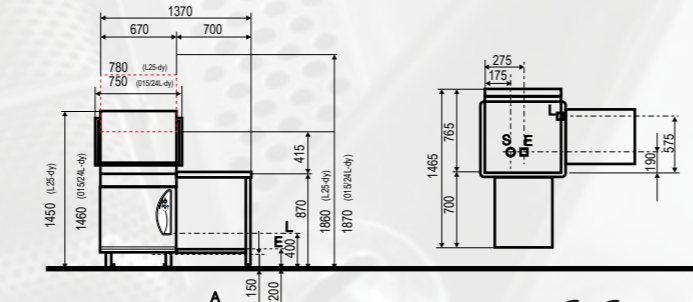
Specifications	015/24L-dy	L25-dy	
DIMENSIONS l x w x h	670X765X1460	670X765X1450	mm
WASHING CAPACITY dishes/H	1080-540-360 (1440)	1080-540-360 (1440)	Nr.
WASHING CAPACITY baskets/H	60 - 30 - 20 30 - 20 - 15	60 - 30 - 20 30 - 20 - 15	Nr.
WASH CYCLE	60" - 120" - 180" 120" - 180" - 240"	60" - 120" - 180" 120" - 180" - 240"	Sec.
MIN. PROGRAMMABLE CYCLE	45" (80 baskets/h)	45" (80 baskets/h)	Sec.
BASKET SIZE	50 x 50	50 x 50	cm
DISHES PER BASKETS	12÷18 (24)	12÷18 (24)	Nr.
WORK HEIGHT	890	890	mm
PLATES CLEARANCE	415	415	mm
VOLTAGE	400V 3N-50Hz	400V 3N-50Hz	V
S.S. PUMP	1100	1100	W
WASH TANK ELEMENT	3000	6000	W
RINSE TANK ELEMENT	9000	9000	W
TOTAL RATING	10100	10100	W
MAX CURRENT INTENSITY	16	16	A
TANK CAPACITY	34	34	Lt
BOILER CAPACITY	8	8	Lt
RINSE-AID DISPENSER	✓	✓	
HOOD WITH DOUBLE INSULATING WALL		✓	
WATER CONNECTION	45 ÷ 50	45 ÷ 50	°C
WATER CONSUMPTION PER CYCLE	2.80	2.80	l
WATER PRESSURE	2 ÷ 4	2 ÷ 4	Bar
RINSING WATER TEMPERATURE	80 ÷ 90	80 ÷ 90	°C
WATER INLET	3/4"	3/4"	"G
WATER OUTLET	32 mm ÷ 1"1/4	32 mm ÷ 1"1/4	"G
NET WEIGHT	133	145	kG
GROSS WEIGHT	151	164	kG
NOISE	63,5	59,5	dB(A)

Optional		
COD. 0800754	SPECIAL "SAVE PLACE" HANDLE	
COD. AC00123	BOILER 12 KW	
COD. AC00118	BOILER 15 KW	
COD. AC00124	BOILER 18 KW	
COD. AC00429	HOOD WITH DOUBLE INSULATING WALL	
COD. 0400367	BASKET SUPPORT FOR CORNER SLIDE	
COD. AC00026	SAFE RINSE (BREAK TANK)	
COD. AC00035	RINSING INCORPORATED BOOSTER PUMP HP 0,30	
COD. AC00221	DETERGENT PUMP	
COD. AC00550	DRAIN PUMP WITH FILTER	
COD.CC000139	PLASTIC GENERAL BASKET 600X500 MM	 600 x 500
COD.CC000140	PLASTIC BASKET 600X500 MM FOR 22/24 DINNER PLATES	
COD.CC000141	PLASTIC BASKET 600X500 MM FOR 10/12 GASTRONORM TRAYS	

LINEAR VERSION



CORNER VERSION



Via Italia, 6 - 26855 Lodivecchio (LO) Italy
Tel. (0371) 753202 - 754248-9 Fax (0371) 752928
www.lamber.com - e-mail: info@lamber.it

COMPANY WITH QUALITY MANAGEMENT
SYSTEM CERTIFIED BY DNV
= ISO 9001:2015 =



SERIE



015/24L-dy
L25-dy

Pass-through dishwasher

Pass-through dishwasher

The choice of the most demanding public catering

015/24L-dy
L25-dy

THINKING
THE FUTURE

DESIGNING
THE PRESENT

lamber

- Pass-through dishwasher Volt 400/3/N 50Hz
- Straight or corner version
- Soft-touch electronic control panel
- Stainless steel construction 18/10 AISI 304
- Rotating lower and upper wash arms in stainless steel
- Rotating lower and upper rinse arms in stainless steel
- Wash cycle time 60"-120"-180" seconds-endless cycle
120"-180"-240" seconds-endless cycle;
- Interactive graphic display that shows all washing phases
- Washing and rising temperatures displaying
- Complete programming of all the washing parameters
- Cycle counter
- Hood with double insulating wall (L25-dy)
- S.S. Drawn wash and rinse arms
- Service maintenance function
- Constante rinse boiler system (RCB)
- Rinse-aid dispenser
- Tank-Self washing cycle
- Economy thermostat
- Thermocontrol
- Tank with double insulated wall
- Drawn tank with self-cleaning bottom
- Integral tank drawer filters
- Automatic cycle start at hood shutting
- Automatic tank loading
- Safety device for hood opening
- Certification: CE

Complete filtering area with extractable tank filter in stainless steel construction.



Drawn tank with self-cleaning bottom for the highest hygiene.



The rack side is detachable and so it allows an easy cleaning of the wash tank.



S.S. drawn wash and rinse arms, designed to guarantee the best washing efficacy.



Efficient

The hood is closed on the 4 sides to keep in itself all the produced heat and reduce the energy waste.

Optimal

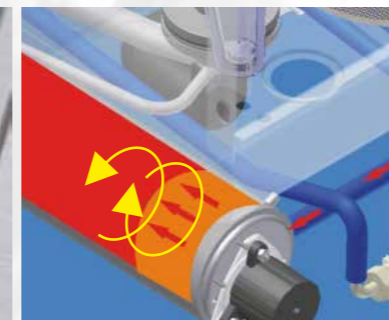
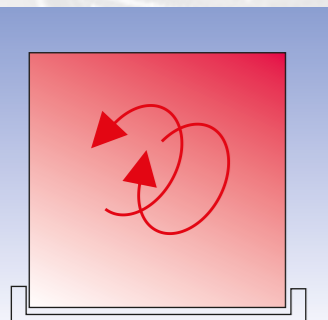
Rinse and wash nozzles are designed to obtain the highest pressure and distribution of the jet during all the cycle.

Easy

The interactive display is simple, intuitive and it provides the user with all necessary information.

Constant

The RCB system (Rinse Constant Boiler) assures a constant temperature during all the phase of the rinsing cycle.



015/24L-dy

New control panel with interactive graphic display.

- Complete programming of all the washing parameters.
- Graphic display with description of washing steps.
- Programming of the timing of detergent and rinse aid pumps.
- Cycle counter.
- Service maintenance function.



HOOD WITH DOUBLE INSULATING WALL



L25-dy

Accessories

- 2 basket in plastic for 12÷18 dishes
- 1 basket in white rilsan steel for 24 dishes (only for L25-dy)
- 1 general basket
- 2 cutlery containers

ALSO FOR
600X500 MM BASKET!



The rilsan coated basket supplied with the machine allows you to wash up to 24 plates simultaneously.



The plastic basket with 2 cutlery inserts supplied with the machine allows you to wash cups and glasses.



12 plates Pizza Basket ø300 mm (option).



The wash pump with S.S. body and S.S. impeller guarantees high reliability and efficacy. The immediate accessibility to the components simplifies servicing operations.

Accessoires

PL	Cod.	Description	Icon
PL	AC00125	LATERAL ENTRY/EXIT TABLE EDGE 40 MM WITH LOWER TABLE	
PSL	COD. AC00221	ENTRY OR EXIT LIFTED SIDE SHELF WITH LOWER SPACE FOR BASKETS - EDGE 40 MM	
PLV	COD. AC00025	PRE-WASHING TABLE IN STAINLESS STEEL, RIGHT OR LEFT, WITH ONE TANK 400X400X200 MM, SPLASH SHIELD AND LOWER TABLE.	
PLVS	COD. AC00127	PRE-WASHING TABLE IN STAINLESS STEEL, RIGHT OR LEFT, WITH ONE TANK 400X400X200 MM, SPLASH SHIELD, LOWER TABLE & HOLE FOR WASTE EXHAUST.	

The top of the hood is inclined to facilitate dewatering at the end of the washing cycle. (015/24L-dy)

